



# Groundworks





Huyton Asphalt Groundworks are a division of Huyton Asphalt Ltd who specialise in Stage 3 adoptions. We are an established company with an excellent track record for client satisfaction and quality of service and have been working in the housing sector for over 50 years.

Our varied scope of work includes:

- Kerbing, edging & block paving
- Driveway & footpath works
- Gully, manhole & utility box services
- Trenching & drainage
- Site excavation & grading
- Traffic management & white lining
- Highways permits & project management
- Collaboration with stakeholders
- Final Surfacing





We pride ourselves on our reliability and efficiency



Our team guarantees to deliver a high quality of workmanship



We are able to deliver our services nationwide



Our excellent relationship with United Utilities and Local Authorities in the North West allow us to deliver our projects on time and most importantly, on budget.





# TESTIMONIAL

'I wanted to pass on some recognition of the work being done on site here by your team. We have a weekly health and Safety standup where people are encouraged to identify and share examples of good EH&S practice observed both internally and from our contractors. The high standards of care and thought being shown by your team have been picked up on this week.

I should point out that this further stands in stark contrast to some other companies we have worked with, so please accept and pass on our thanks for this!'

**#HAMeansMore**





# CASE STUDY

CRANBERRY LANE, DARWEN





# CASE STUDY

MILTON AVENUE, CLITHEROE



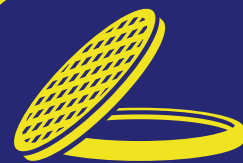


# CASE STUDY

## MAGHULL, SEFTON



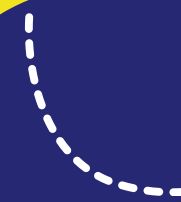
Kerbing  
Installation



Gully  
Installation



Landscaping  
Services



White  
Lining



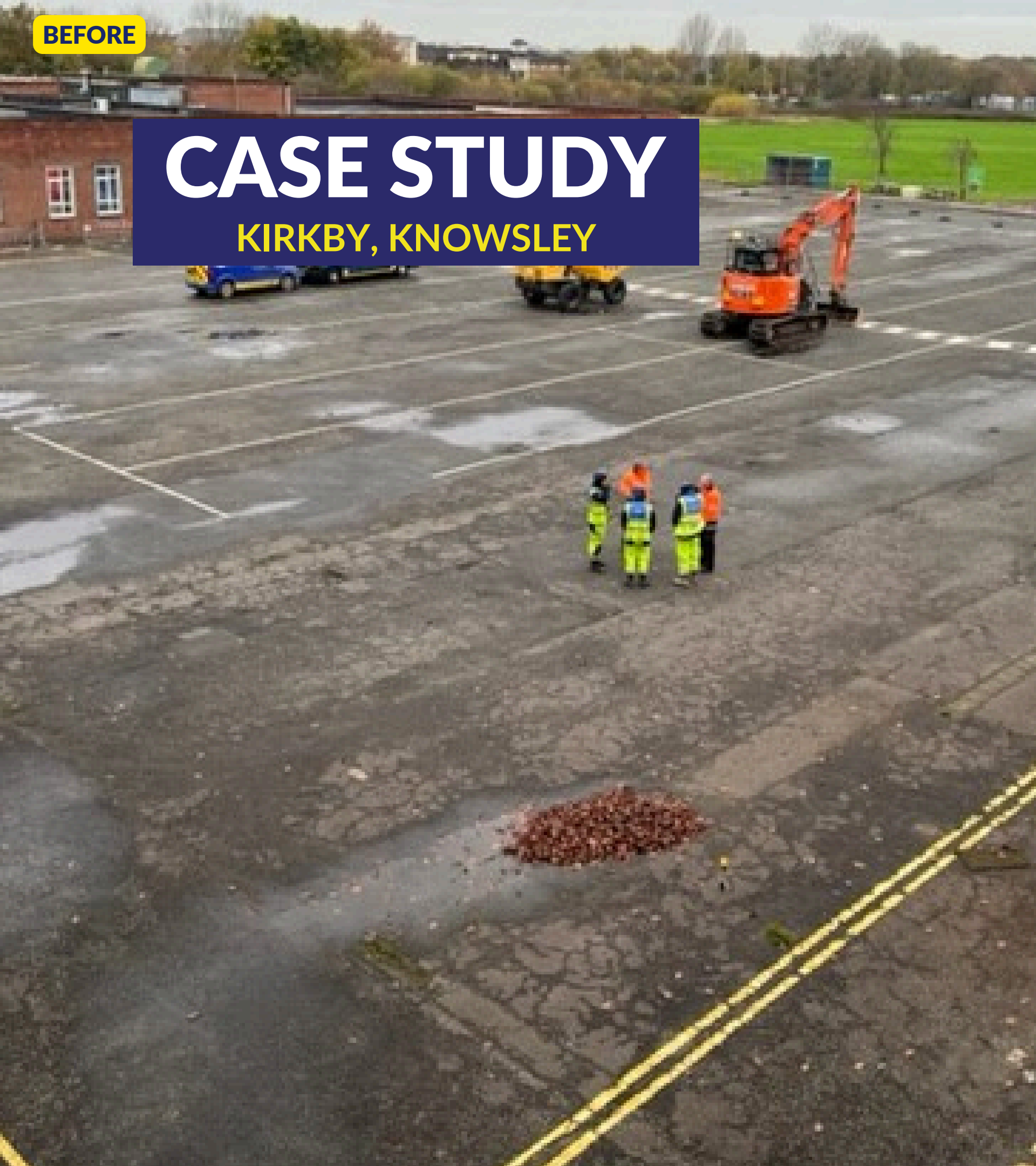
Groundworks



BEFORE

# CASE STUDY

KIRKBY, KNOWSLEY



AFTER















# Groundworks

**Please feel free to get in touch about any business requirements/queries you may have.**

**[hagroundworks@huyton-asphalt.co.uk](mailto:hagroundworks@huyton-asphalt.co.uk)**

